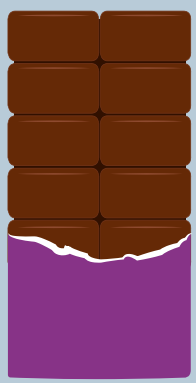


¿Qué es la Huella Hídrica?

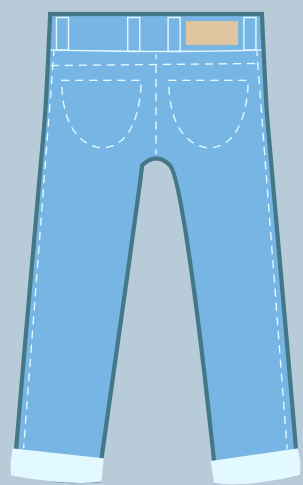
Mide la cantidad de agua dulce que se ocupa en la elaboración de productos de consumo y actividades de la vida diaria.



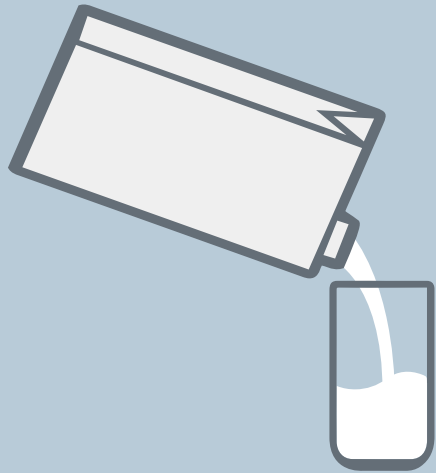
1 kilo de chocolate: 17.000 litros



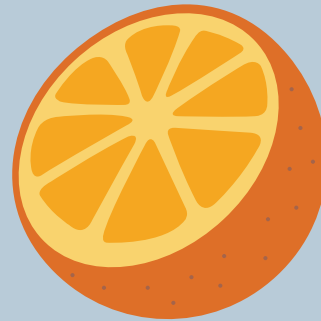
1 polera de algodón: 2.500 litros



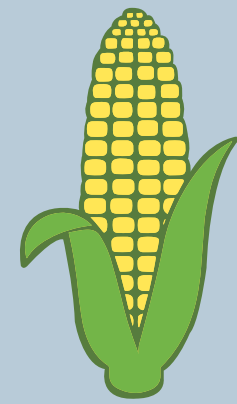
1 jeans: 8.000 litros



1 litro de leche: 1000 litros



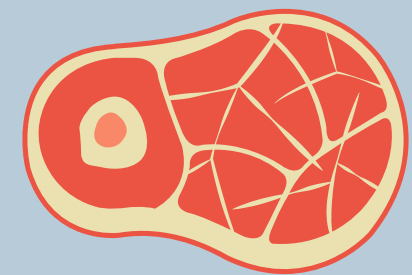
1 naranja: 50 litros



1 kilo de maíz: 450 litros



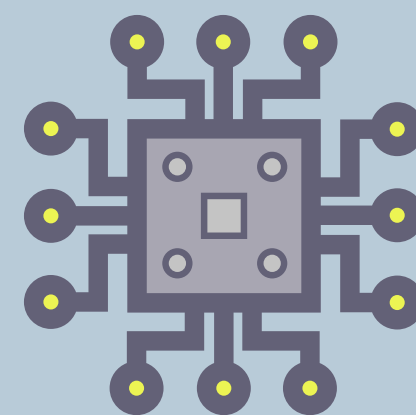
1 kilo de arroz: 1.700 litros



1 kilo de carne: 15.000 litros



Par de zapatos: 8,000 litros



1 microchip: 130 litros